

RETAIL SPACE FOR LEASE

# MOLOKAI STORES

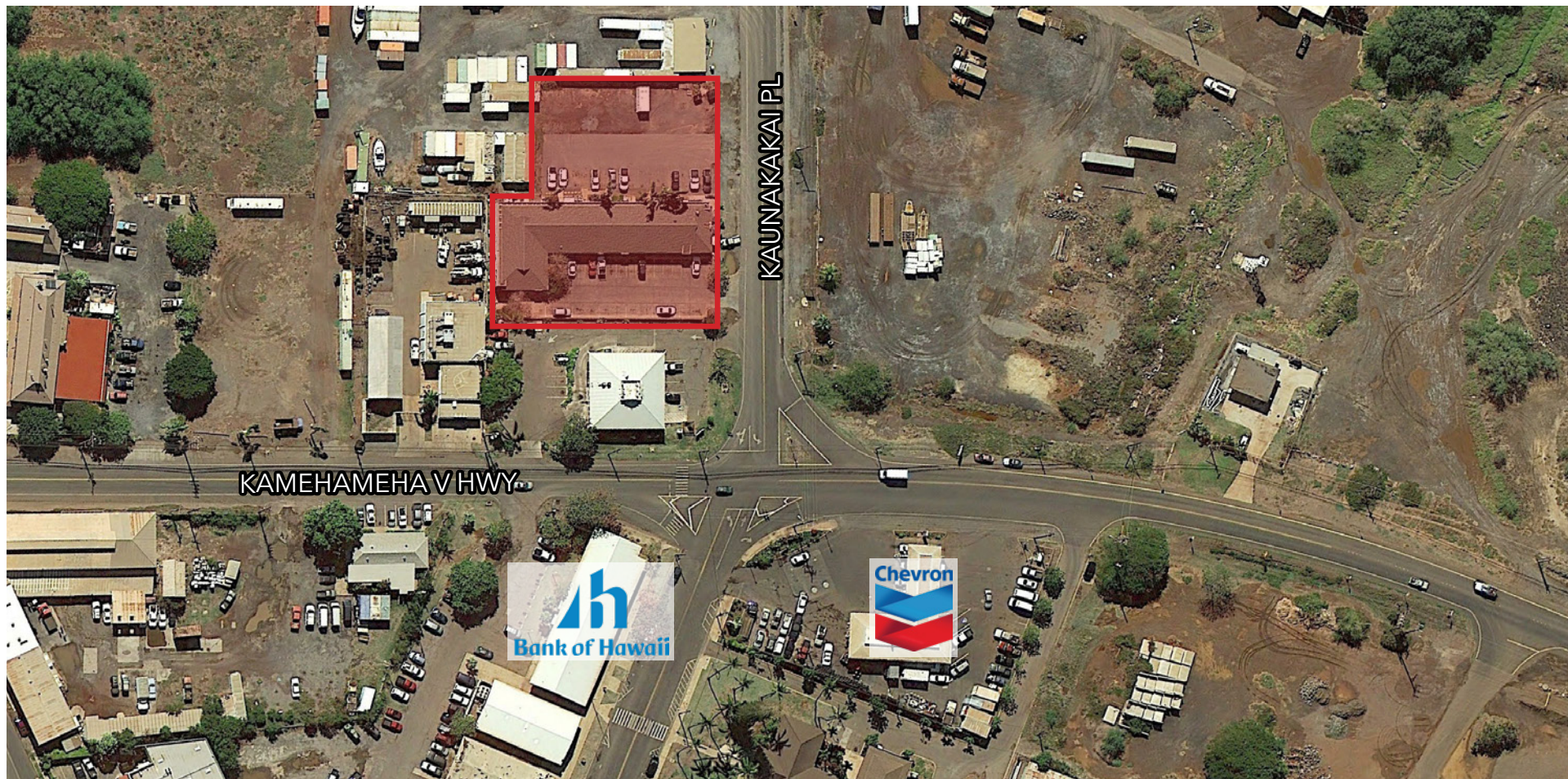
15 & 25 KAUNAKAKAI PL, MOLOKA'I





## PROPERTY OVERVIEW

Molokai Stores is an 8,290 square foot, centrally located commercial property on 32,247 square feet of land in Kuanakakai. Easy street access and 35 parking stalls make it convenient for customers. The high-density residential location and daytime office population keep the center consistently busy. The center is home to the busiest laundromat (Friendly Isle Laundromat) and one of the top restaurants on island, Molokai Pizza, as well as Bank of Hawaii and Molokai Burger adjacent to the center.

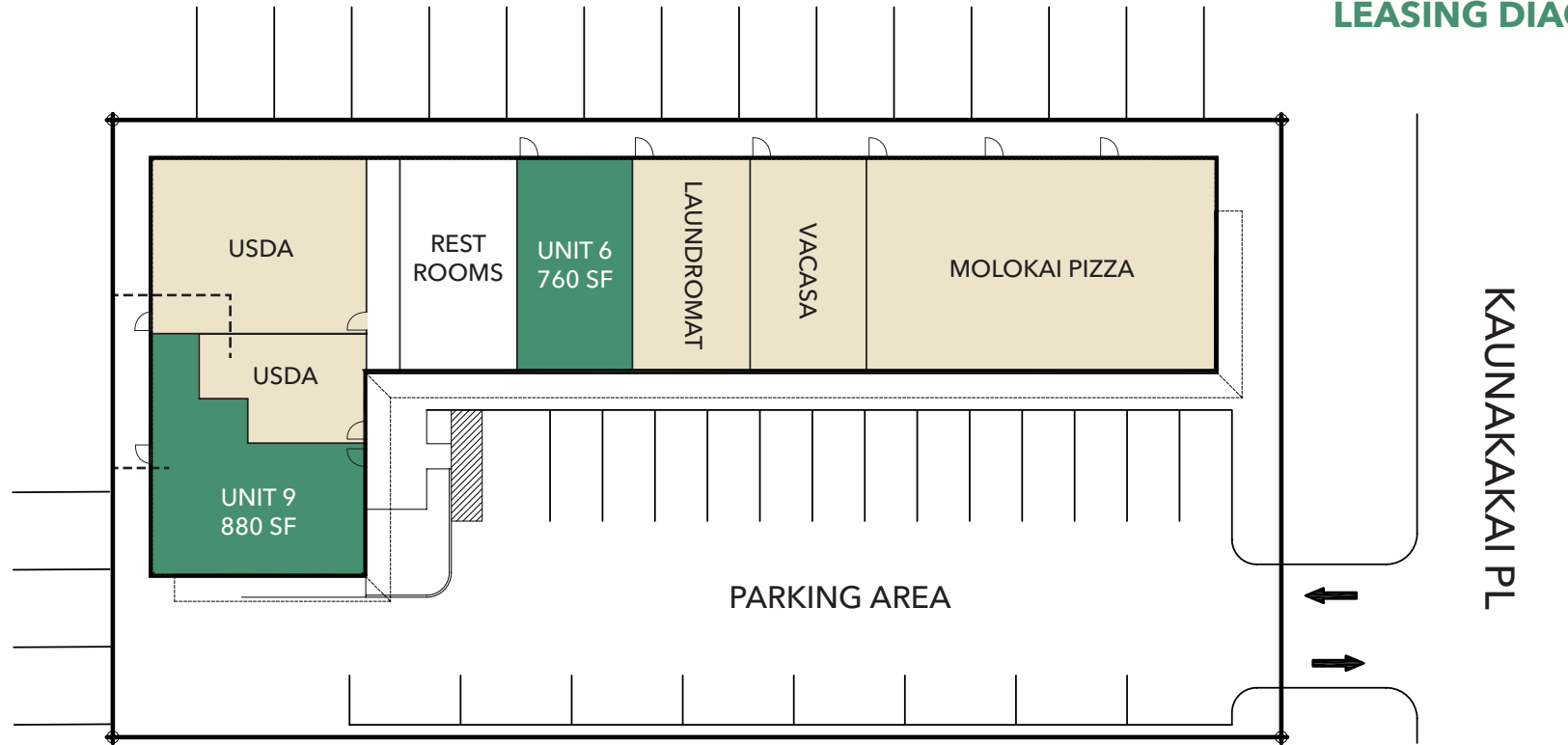




## PHOTO GALLERY: MOLOKAI STORES - UNIT 9 - 880 SF



## LEASING DIAGRAM



### AVAILABLE SPACES

<b>Unit</b>	9
<b>Size</b>	880 SF
<b>Availability</b>	Immediately
<b>Base Rent</b>	Negotiable
<b>CAM/RPT</b>	\$1.19/PSF

<b>Unit</b>	6
<b>Size</b>	760 SF
<b>Availability</b>	4/1/25
<b>Base Rent</b>	Negotiable
<b>CAM/RPT</b>	\$1.19/PSF