

NOW AVAILABLE FOR LEASE

# DOWNTOWN HONOLULU RETAIL

EXECUTIVE CENTER | 1088 BISHOP STREET



**BEALL CORP**  
RETAIL REAL ESTATE



# PROPERTY OVERVIEW

Located in the Executive Center at 1088 Bishop Street, this exceptional property offers a total of 65,910 SF of versatile space across three levels. The ground floor retail space spans 19,500 SF, with an additional 31,600 SF on the lower level and 14,810 SF on the second level. Situated in the heart of the business district, this property is ideal for office or retail use. It boasts excellent accessibility, being directly on the bus line and within walking distance to numerous restaurants, banks, and a 24-hour fitness center. On-site parking is also available, making it a convenient choice for businesses looking to establish a presence in a bustling area.



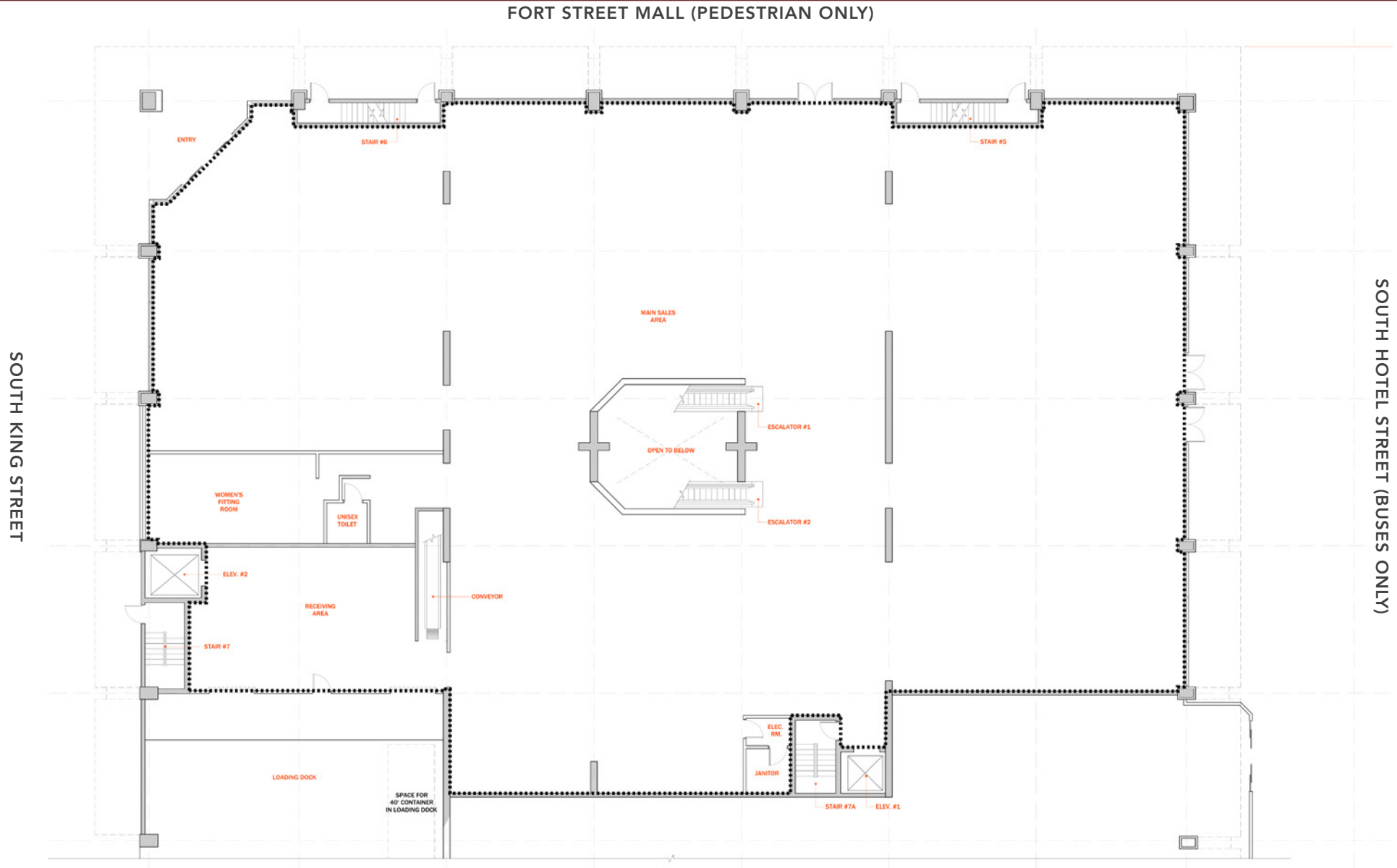
## LEASE DETAILS

LOCATION	1088 Bishop Street Honolulu, HI 96813
SIZE	31,600 SF Lower Level 19,500 SF Street Level <u>14,810 SF Second Level</u> 65,910 SF TOTAL
BASE RENT	See Listing Broker
CAM/RPT	\$6.70/SF/Year
UTILITIES	Seperately Metered
ZONING	BMX-4
AVAILABILITY	Immediately
TERM	Negotiable
HIGHLIGHTS	<ul style="list-style-type: none"><li>• Excellent location in the heart of Honolulu's Business District</li><li>• High ceilings, private escalator and elevators</li><li>• Entrances on both King Street and Hotel Street</li><li>• Customer parking available</li><li>• 34,000+ daytime population</li><li>• Private loading dock, two bays load directly into lower level</li></ul>

# FLOOR PLAN - LOWER LEVEL



# FLOOR PLAN - STREET LEVEL



# FLOOR PLAN - SECOND LEVEL



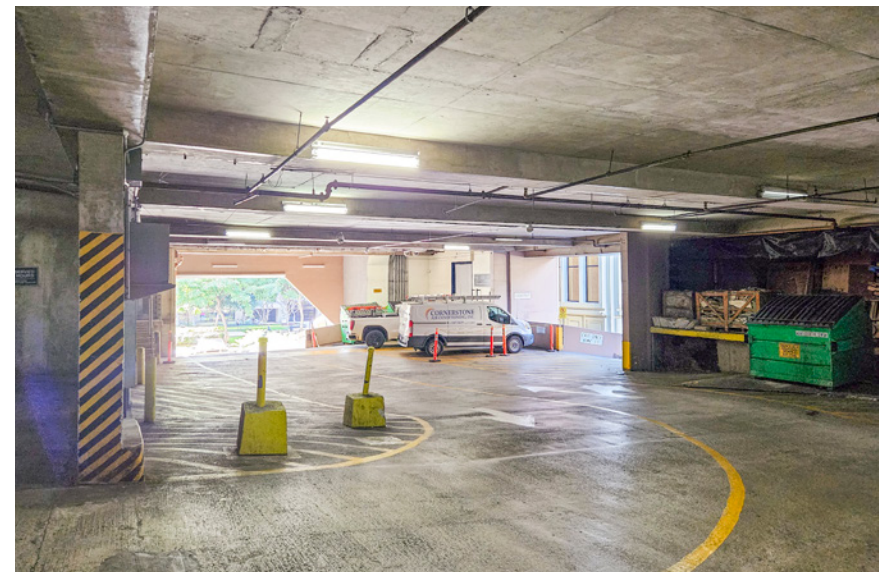
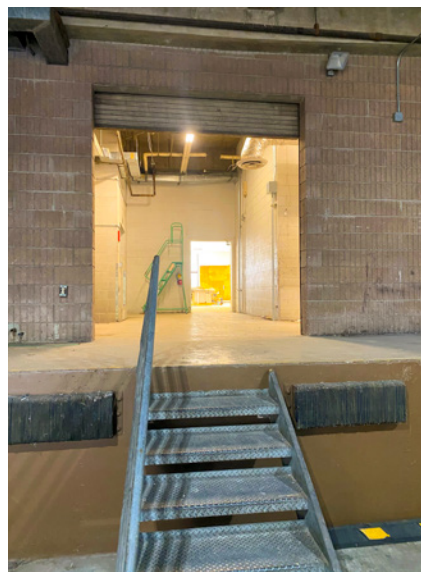


# PROPERTY PHOTOS





# PROPERTY PHOTOS





# REDEVELOPMENT PROJECTS - DOWNTOWN HONOLULU



1120 12TH AVENUE, SUITE 301  
HONOLULU, HI 96816  
WWW.THEBEALLCORPORATION.COM

This document has been prepared by The Beall Corporation for advertising and general information only. The Beall Corporation makes no guarantees, representations or warranties of any kind, expressed or implied, regarding the information including, but not limited to, warranties of content, accuracy and reliability. Any interested party should undertake their own inquiries as to the accuracy of the information. The Beall Corporation excludes unequivocally all inferred or implied terms, conditions and warranties arising out of this document and excludes all liability for loss and damages arising therefrom. This publication is the copyrighted property of The Beall Corporation and/or its licensor(s). © Copyright 2025, All rights reserved.