

WAIKIKI RESTAURANT BUILDING FOR LEASE

2443 PRINCE EDWARD STREET, HONOLULU, HI 96815



BEALL CORP
RETAIL REAL ESTATE

GRAHAM GROUP
powered by
exp
REALTY

THIS PHOTO HAS BEEN DIGITALLY ENHANCED

ALA WAI CANAL

ALA WAI CANAL



WAIKIKI MAP

BEALL CORP
RETAIL REAL ESTATE

CHRIS YARIS (S), SENIOR VICE PRESIDENT
(808) 469-4337
CHRIS@THEBEALLCORPORATION.COM



LOREN GRAHAM, REALTOR®, BIC
(808) 349-6210
LOREN@GRAHAM-HAWAII.COM



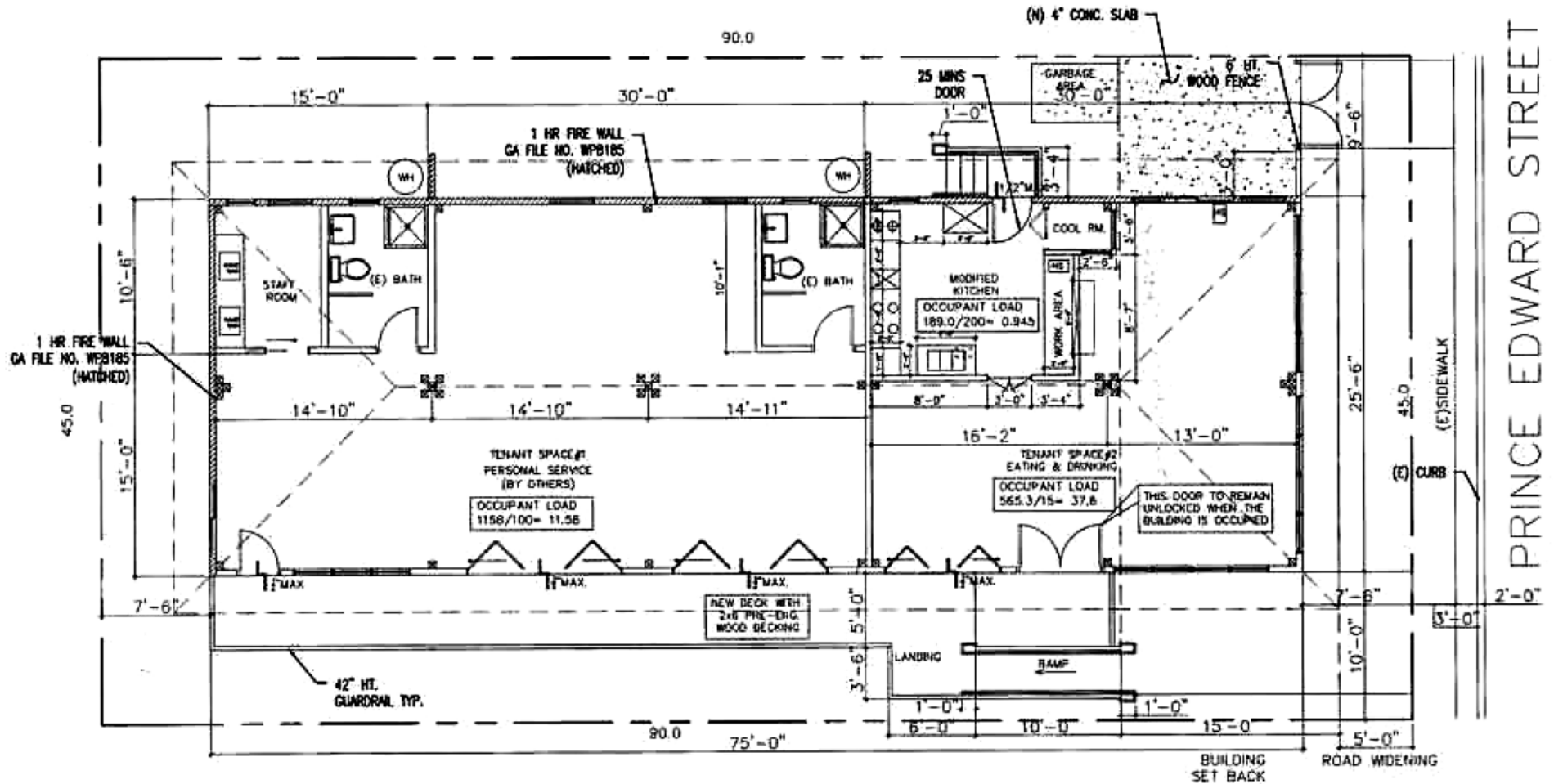
LEASE DETAILS

LOCATION	2443 Prince Edward Street Honolulu, HI 96815
SIZE	1,913 SF
AVAILABLE	Immediately
TERM	Negotiable
GROSS RENT	Contact Agent
ZONING	Resort Mixed Use
HIGHLIGHTS	<ul style="list-style-type: none">• High density tourist area• Built in 1942 and renovated in 2024 for Café or Restaurant use• Multi-use, stand-alone property in Waikiki• Fully built-out with grease trap, hood, and plumbing• Private outdoor seating area• Two Private restrooms

PHOTO GALLERY



FLOOR PLAN





WAIKIKI MARKET HIGHLIGHTS

30,787

Visitor Lodging
Units

22,731+

Waikiki Hotel
Rooms

99,194

Average Daily Visitor
Population On-island

30,441

Average Daily
Local Population

21,869

Average Daily
Employees

1.5 Million+

Square Feet
of Retail GLA

■ **Waikiki Retail:** Dior, Louis Vuitton, Gucci, Chanel, Hermès, Rolex, Yves Saint Laurent, Fendi, Balenciaga, Tiffany & Co., Valentino, Bottega Veneta, Prada, Moncler, Tesla, Jimmy Choo, Kith, Harry Winston, Salvatore Ferragamo, DFS, H&M, Sephora, Victoria's Secret, Ross, Macy's, Rip Curl, and many more

■ **Waikiki Restaurants:** The Cheesecake Factory, Tommy Bahama, P.F. Chang's, Hard Rock Cafe, Ruth's Chris Steak House, Yard House, Duke's Waikiki, Maui Brewing Co., Roy's, Paia Fish Market, StripSteak Waikiki, Marugame Udon, Poké Bar, Morimoto Asia and many more

This document has been prepared by The Beall Corporation for advertising and general information only. The Beall Corporation makes no guarantees, representations or warranties of any kind, expressed or implied, regarding the information including, but not limited to, warranties of content, accuracy and reliability. Any interested party should undertake their own inquiries as to the accuracy of the information. The Beall Corporation excludes unequivocally all inferred or implied terms, conditions and warranties arising out of this document and excludes all liability for loss and damages arising there from. This publication is the copyrighted property of The Beall Corporation and/or its licensor(s). © Copyright 2025, All rights reserved.



Scan or visit eepurl.com/c2rzHH to sign up for The Beall Corporation Newsletters and stay on top of Hawaii's Commercial Real Estate News

WWW.THEBEALLCORPORATION.COM

1120 12TH AVENUE, SUITE 301 | HONOLULU, HI 96816

WWW.GRAHAMGROUPEHAWAII.COM

500 ALA MOANA BLVD. #7-400 | HONOLULU, HI 96813

BEALL CORP
RETAIL REAL ESTATE

G **GRAHAM GROUP**
powered by **exp**
REALTY