



SPACE FOR LEASE

Office / Retail / Service Use

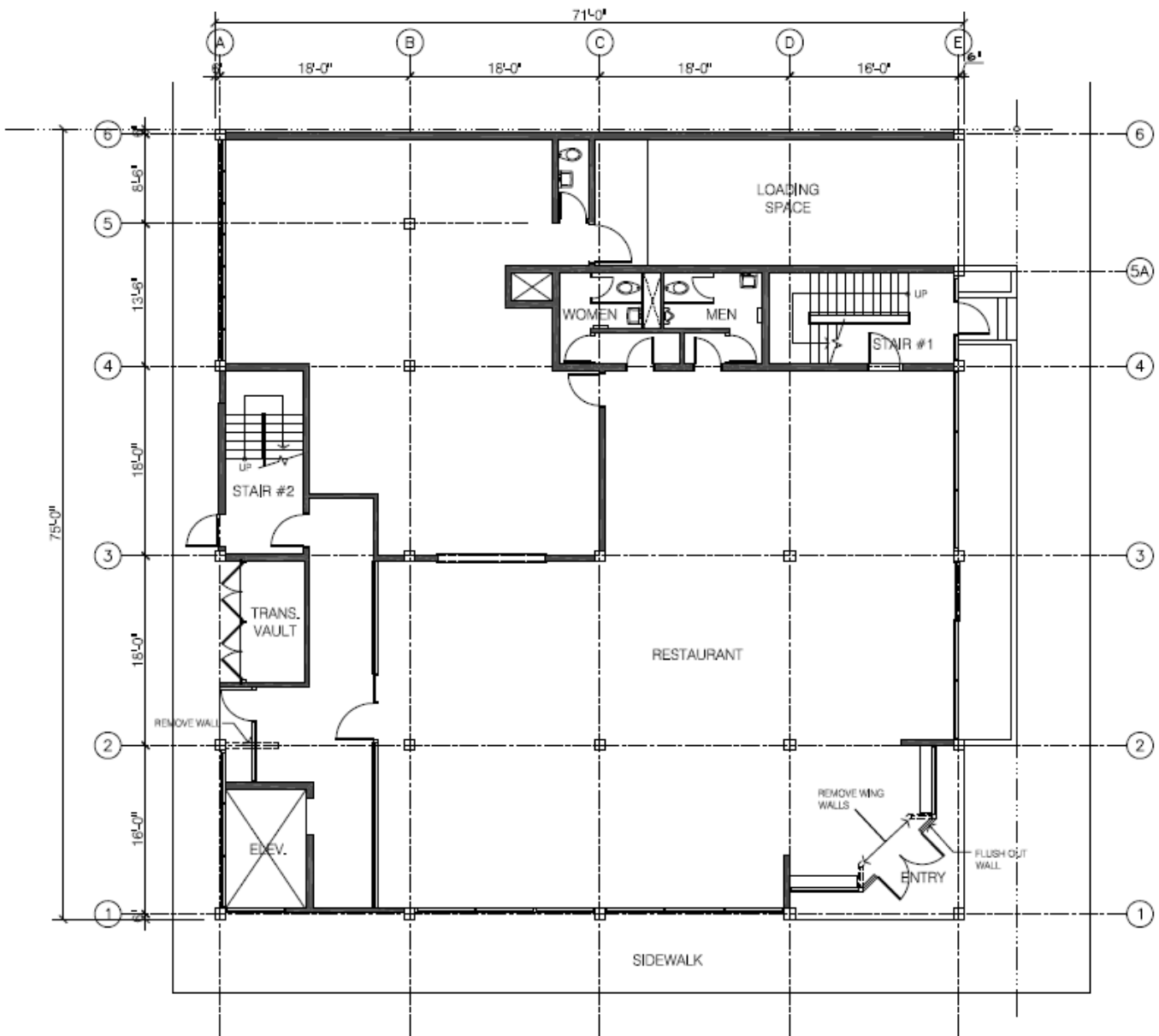


Property Details	Features & Benefits
Ground Floor: 4,500 SF (demisable)	▪ Prime Kaimuki Location
Second Floor: 5,035 SF LEASED	▪ Elevator
Third Floor:	▪ Central AC
Suite 301: 1,468 SF	▪ Men's and Women's Restrooms on each floor
Suite 302: 1,468 SF	▪ Adjacent to Municipal Parking Lot
Suite 303: 746 SF	▪ Desirable Neighborhood
Suite 304: 729 SF	▪ Proposed Outdoor seating area fronting 12th Avenue
Suite 305: 581 SF	▪ Office Delivery Date: April 1, 2012
Office Rent: \$1.50 RSF/Month	
Retail Rent: \$3.00—\$4.00 PSF/ Month	
CAM & RPT: \$0.65 PSF/Month	
Utilities: Sep. Metered	

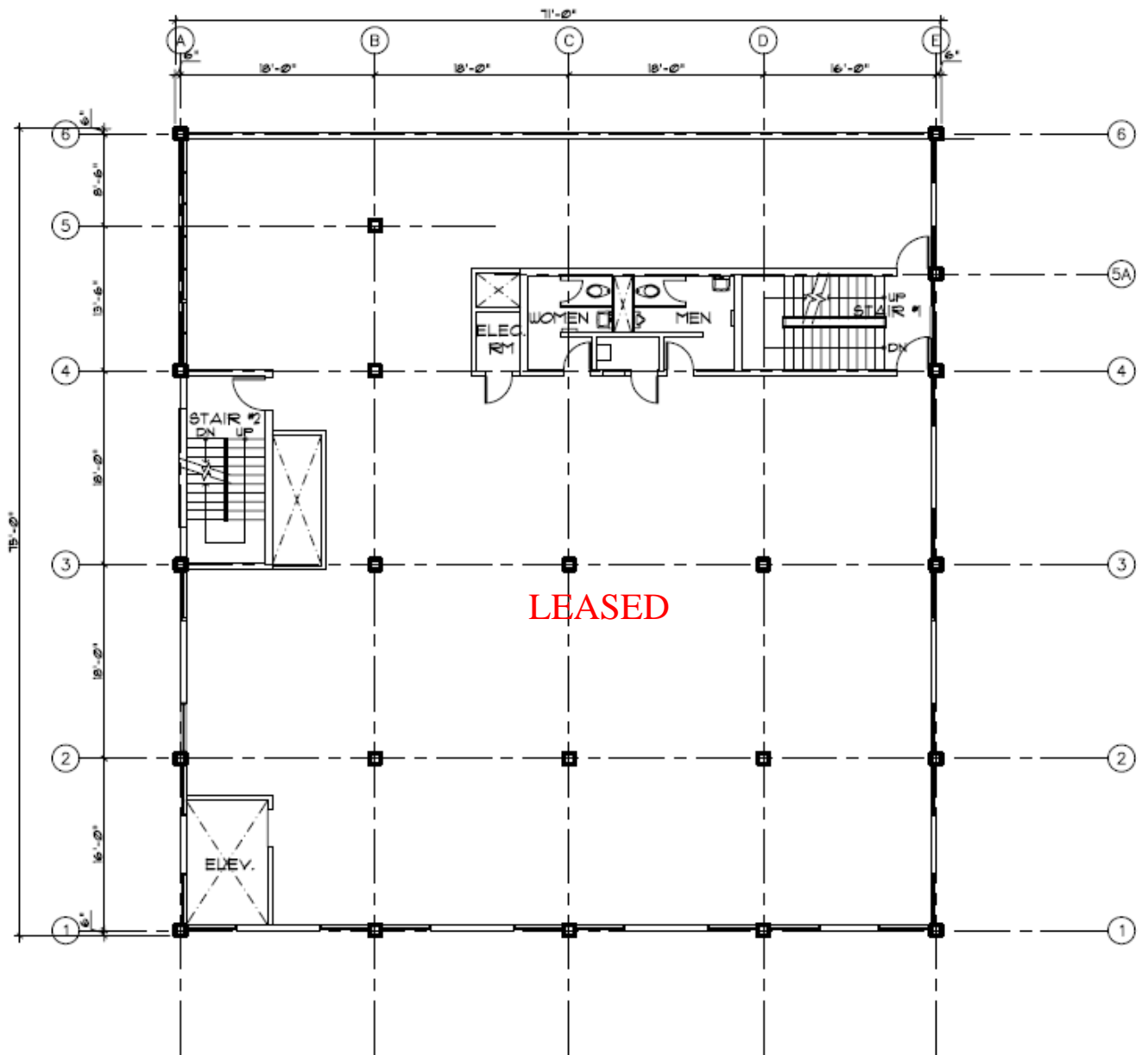
Contact:
Cory A. Beall (B)

3599 Waialae Avenue Suite 21 • Honolulu, HI 96816 • Tel: (808) 469-4333 • Fax: (808) 469-4334

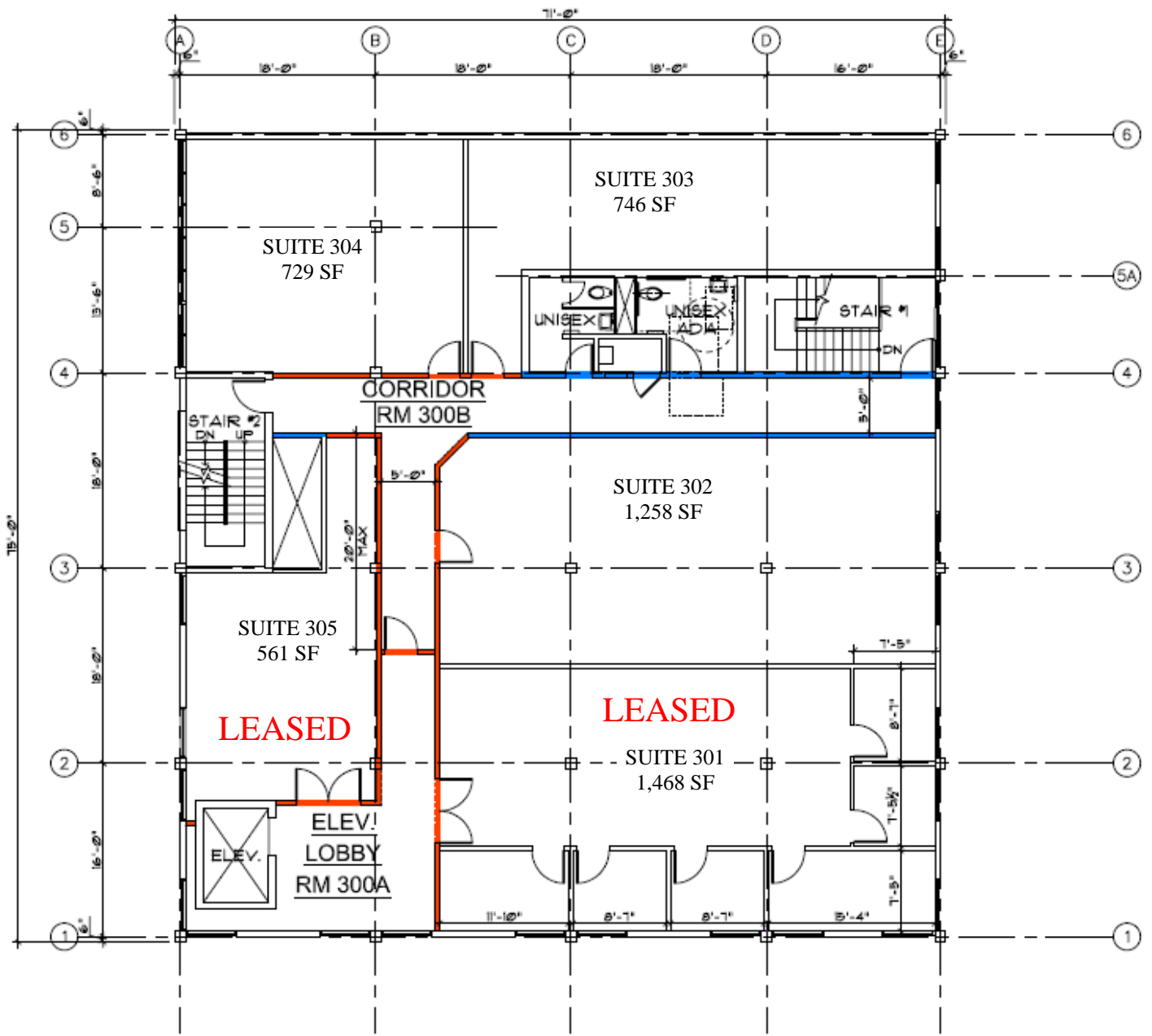
The information contained herein has been given to us by the owner of the property or other sources we deem reliable, we have no reason to doubt its accuracy, but we do not guarantee it. All information should be verified prior to purchase or lease.



GROUND FLOOR



SECOND FLOOR



THIRD FLOOR