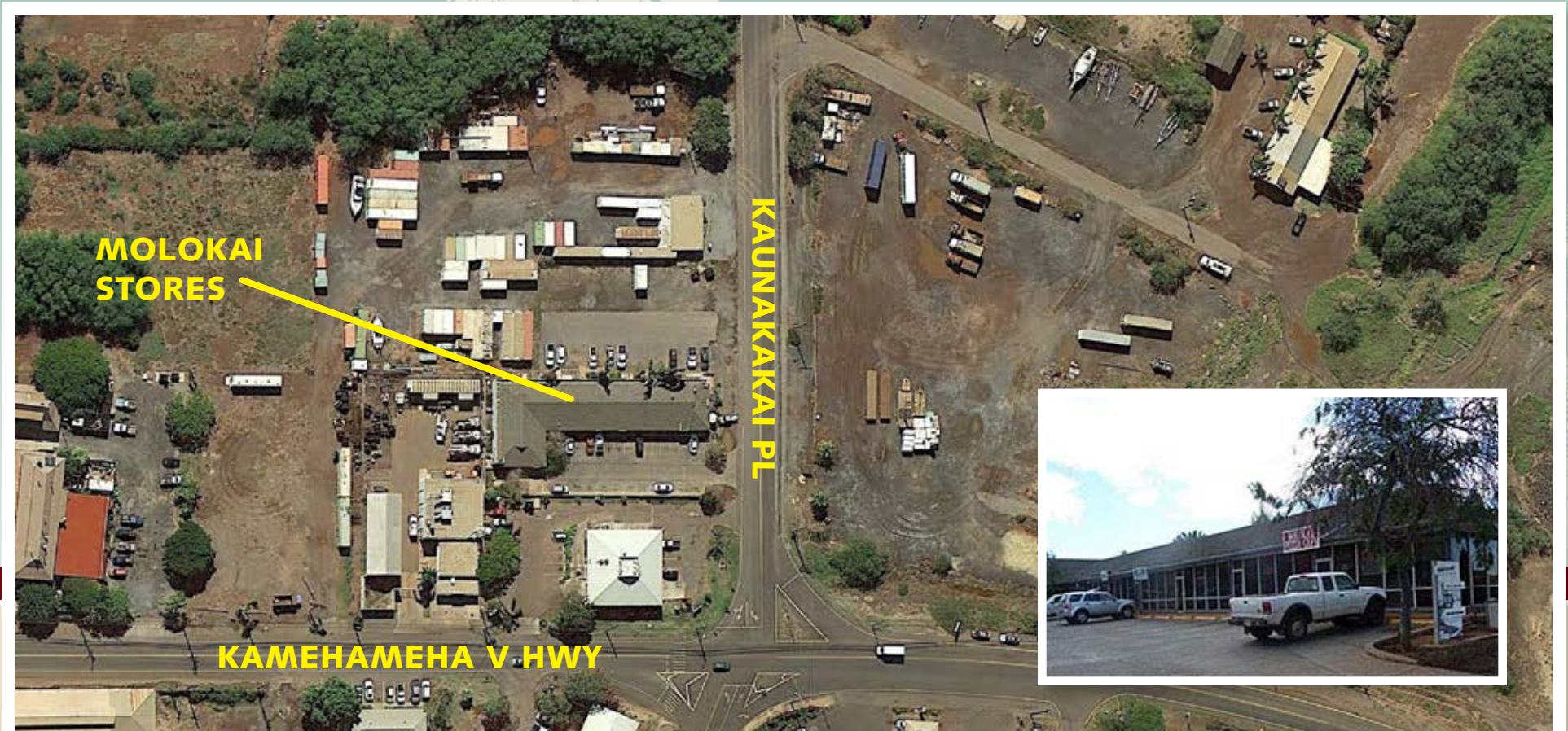


MOLOKAI STORES | KAUNAKAKAI, MOLOKAI

Molokai Stores is an 8,290 square foot, centrally located commercial property on 32,247 square feet of land in Kaunakakai. Easy street access and 35 parking stalls make it convenient for customers. The high-density residential locale and daytime office population keep the center consistently busy. The center is home to the busiest laundromat (Friendly Isle Laundromat) and one of top restaurants (Molokai Pizza) on island as well as First Hawaiian Bank, Bank of Hawaii, Molokai Burger.



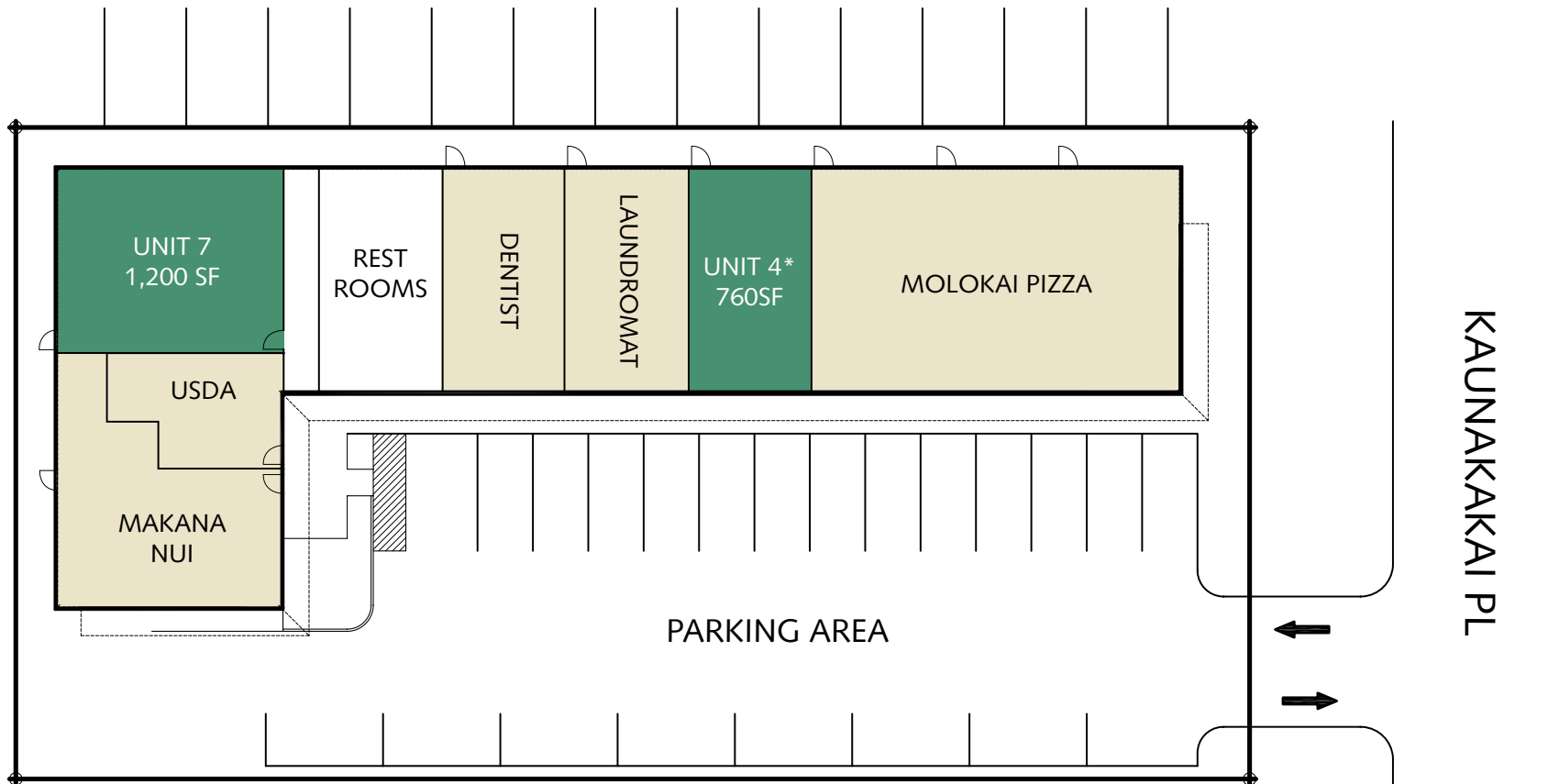
15 & 25 Kaunakakai Place • Kaunakakai, Hawaii 96748

Cory Beall (B), President

(808) 469-4331 • cory@thebeallcorporation.com



1120 12TH AVENUE, SUITE 301, HONOLULU, HI 96816
WWW.THEBEALLCORPORATION.COM



DEMOGRAPHICS

Fulltime Residents (2010) 7,345

Molokai reached 285,991 total visitor days in 2015

AVAILABLE SPACES

Base Rent: Negotiable

CAM/RPT: \$.60 PSF

Delivery: As-is

Space 4* 760 SF

Space 7 1,200 SF

*Currently built-out as office space

Cory Beall (B), President

(808) 469-4331 • cory@thebeallcorporation.com



Scan or visit eepurl.com/cYstrT to sign up for The Beall Corporation Newsletters and stay on top of Hawaii's Commercial Real Estate News



This document has been prepared by The Beall Corporation for advertising and general information only. The Beall Corporation makes no guarantees, representations or warranties of any kind, expressed or implied, regarding the information including, but not limited to, warranties of content, accuracy and reliability. Any interested party should undertake their own inquiries as to the accuracy of the information. The Beall Corporation excludes unequivocally all inferred or implied terms, conditions and warranties arising out of this document and excludes all liability for loss and damages arising there from. This publication is the copyrighted property of The Beall Corporation and/or its licensor(s). © Copyright 2018, All rights reserved.

1120 12TH AVENUE, SUITE 301, HONOLULU, HI 96816
WWW.THEBEALLCORPORATION.COM