

# KAIMUKI RETAIL/ RESTAURANT SPACE

1127 11th Avenue  
Honolulu, HI



## SPACE INFO

- Ground Level- 2,598 Sq Ft
- Second Level- 1,000 Sq Ft
- Outdoor Seating Potential
- Excellent restaurant space
- Available Immediately

## BUILDING INFO

- Great visibility and frontage to both 11th Avenue and the primary Kaimuki parking lot.
- Three-story mixed-use retail and office building.

## KAIMUKI

- Excellent combination of daytime office population and high density residential area.
- Kaimuki is the primary restaurant district for East Oahu, featuring several established restaurants.

## DEAL TERMS

- Base Rent-
  - Ground Floor- \$4.00 PSF Net
  - 2nd Level- \$2.50 PSF Net
- CAM/RPT - \$0.60 PSF Monthly
- Delivery- As-is

## DEMOGRAPHIC HIGHLIGHTS

- 2.4 Miles from Waikiki including 28,000 lodging units and an estimate daily visitor pop. of 75,000
- 93,000 residents within a 3-minute drive

## NEARBY TENANTS

Big City Diner, 12th Ave Grill, Hale Vietnam, Bikram Yoga, Via Gelato, Koko Head Café, SALT, Town, Himalayan Kitchen, Silent Dance Center, Paul Brown Ulupono Academy

## FOR MORE INFORMATION

DARREN S. LAKE 808.469.4332 | [darren@thebeallcorporation.com](mailto:darren@thebeallcorporation.com)



# KAIMUKI RETAIL/ RESTAURANT SPACE

1127 11th Avenue  
Honolulu, HI



## DEMOGRAPHICS

	3-Minute Drive	5-Minute Drive	10-Minute Drive
Population	93,105	187,032	326,568
Daytime Population	38,976	133,704	265,562
Average HH Income	\$82,774	\$77,849	\$81,636

## FOR MORE INFORMATION

DARREN S. LAKE 808.469.4332

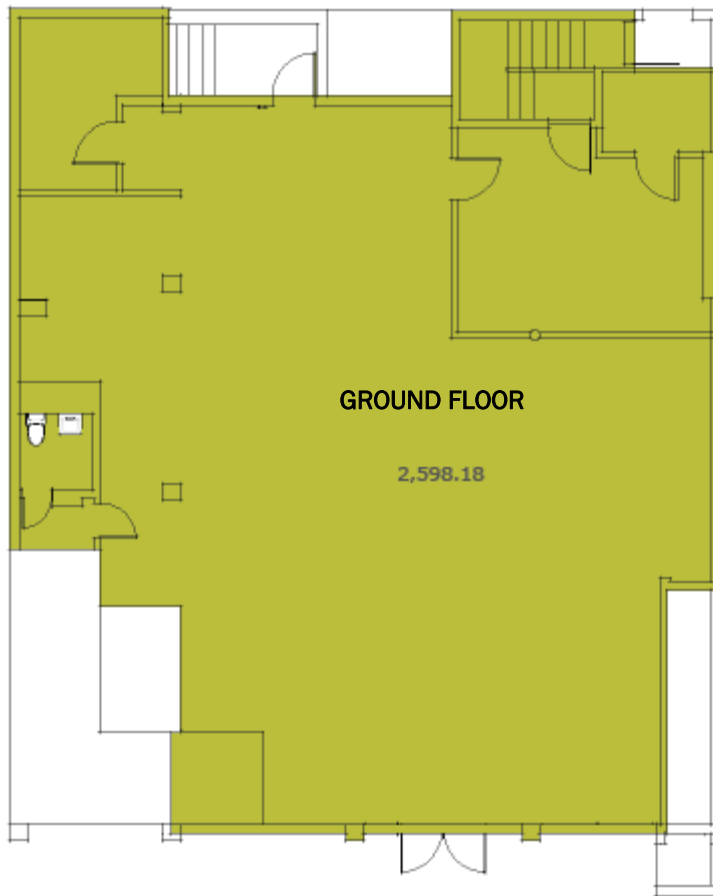
darren@thebeallcorporation.com



# KAIMUKI RETAIL/ RESTAURANT SPACE

1127 11th Avenue  
Honolulu, HI

Kaimuki Municipal Lot Side



11th Avenue Side

FOR MORE INFORMATION

DARREN S. LAKE 808.469.4332

darren@thebeallcorporation.com

