

KAIMUKI RETAIL/ RESTAURANT SPACE

1127 11th Avenue
Honolulu, HI



SPACE INFO

- Ground Level- 2,598 Sq Ft
- Second Level- 1,000 Sq Ft
- Outdoor Seating Potential
- Excellent restaurant space
- Available Immediately

BUILDING INFO

- Great visibility and frontage to both 11th Avenue and the primary Kaimuki parking lot.
- Three-story mixed-use retail and office building.

KAIMUKI

- Excellent combination of daytime office population and high density residential area.
- Kaimuki is the primary restaurant district for East Oahu, featuring several established restaurants.

DEAL TERMS

- Base Rent-
 - Ground Floor- \$4.00 PSF Net
 - 2nd Level- \$2.50 PSF Net
- CAM/RPT - \$0.60 PSF Monthly
- Delivery- As-is

DEMOGRAPHIC HIGHLIGHTS

- 2.4 Miles from Waikiki including 28,000 lodging units and an estimate daily visitor pop. of 75,000
- 93,000 residents within a 3-minute drive

NEARBY TENANTS

Big City Diner, 12th Ave Grill, Hale Vietnam, Bikram Yoga, Via Gelato, Koko Head Café, SALT, Town, Himalayan Kitchen, Silent Dance Center, Paul Brown Ulupono Academy

FOR MORE INFORMATION

DARREN S. LAKE 808.469.4332 | darren@thebeallcorporation.com



BEALL CORP
RETAIL REAL ESTATE

KAIMUKI RETAIL/ RESTAURANT SPACE

1127 11th Avenue
Honolulu, HI



DEMOGRAPHICS

	3-Minute Drive	5-Minute Drive	10-Minute Drive
Population	93,105	187,032	326,568
Daytime Population	38,976	133,704	265,562
Average HH Income	\$82,774	\$77,849	\$81,636

FOR MORE INFORMATION

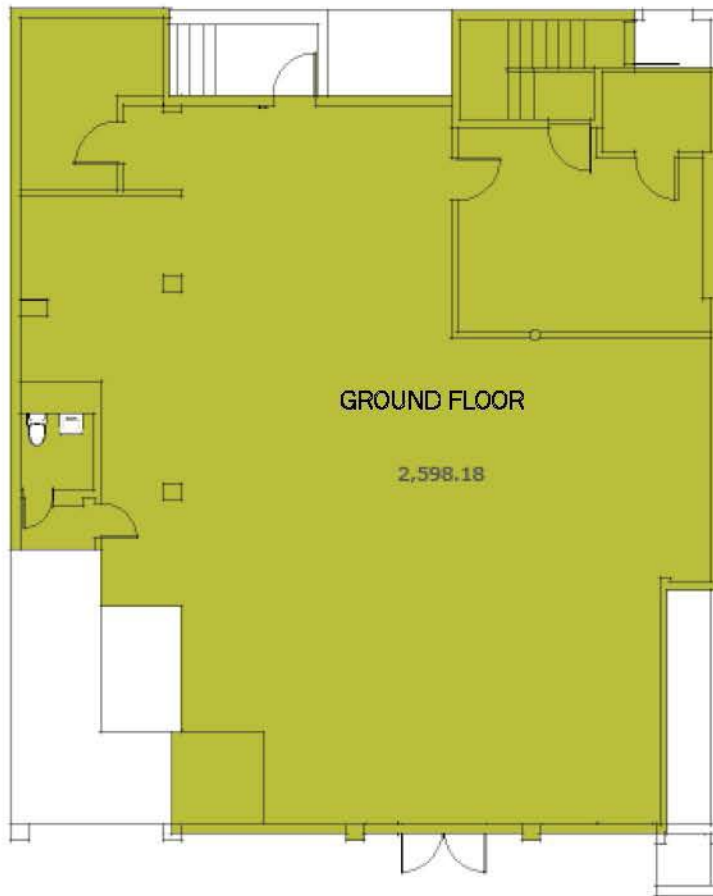
DARREN S. LAKE 808.469.4332
darren@thebeallcorporation.com



KAIMUKI RETAIL/ RESTAURANT SPACE

1127 11th Avenue
Honolulu, HI

Kaimuki Municipal Lot Side



11th Avenue Side

FOR MORE INFORMATION

DARREN S. LAKE 808.469.4332

darren@thebeallcorporation.com



Information given in this presentation is subject to verification and no liability for errors or omissions is assumed.

No subagency offered or intended. Information contained herein, although considered reliable, cannot be guaranteed. © Copyright 2017, All Rights Reserved by The Beall Corporation.